

Missouri State Emergency Management Agency (SEMA)



SEMA's mission is to protect the lives and property of all Missourians when major disasters threaten public safety in any city, county or region of Missouri. SEMA responds to two types of disasters - natural and those caused by man. Natural disasters are major snow and/or ice storms, floods, tornadoes and/or severe weather, as well as a potential major earthquake along Missouri's New Madrid Fault. Man-made disasters, also known as technological emergencies, may include hazardous material incidents, nuclear power plant accidents and other radiological hazards.

It is important to remember that you should periodically check this website if a major disaster has been declared in Missouri. This site provides up-to-date information concerning the disaster.

If you click on this link you will be leaving this website.

[Disaster Relief](#)

Print

Table of Contents

NEWS

News & publications

The news about recent activities for needed peoples.

[More News](#)

22 Feb 2025

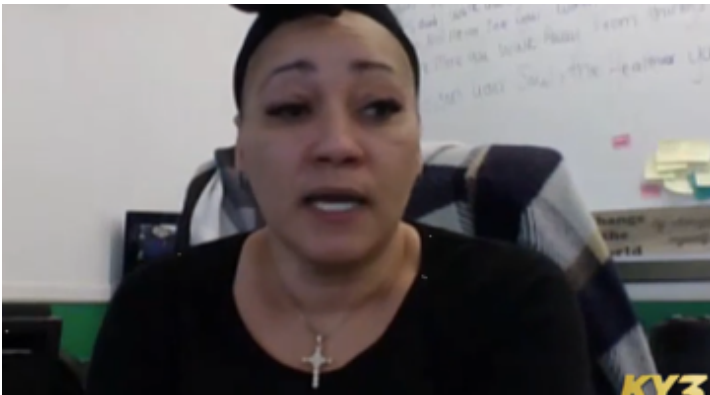


National Slam the Scam Day

National Slam the Scam Day March 6, 2025 On National Slam the Scam...

[Continue Reading](#)

31 Dec 2024



New Missouri law regarding the expungement of criminal records

JEFFERSON CITY, Mo. (KY3) - A provision contained within a larger criminal...

[Continue Reading](#)