

# Washington University - Stl., MO - Low-Income Tax Assistance



Washington University School of Law In St. Louis, Missouri, participates in the Internet Revenue Service - Low-Income Taxpayer Clinic (LITC). The clinic provides representation for qualifying clients with active controversies with the IRS. Basically, the Washington University Low-Income Taxpayer Clinic can assist with anything other than the preparation and filing of a tax return. We are also charged with providing education on the rights and responsibilities of taxpayers.

You can either click the following link to find out more information about this service at [http://law.wustl.edu/ClinicalEd/LITC\\_Client.aspx](http://law.wustl.edu/ClinicalEd/LITC_Client.aspx) or you can open the PDF document attached below.

**If you click on this link you will be leaving this website.**

[Taxes](#)

Files

[Wash U taxpayer postcard 11-28.pdf](#)

Print

## Table of Contents

### NEWS

#### **News & publications**

The news about recent activities for needed peoples.

[More News](#)

22 Feb 2025

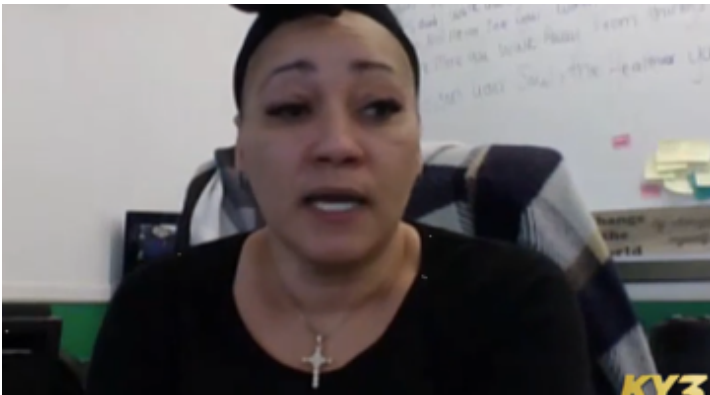


#### National Slam the Scam Day

National Slam the Scam Day March 6, 2025 On National Slam the Scam...

[Continue Reading](#)

31 Dec 2024



New Missouri law regarding the expungement of criminal records

JEFFERSON CITY, Mo. (KY3) - A provision contained within a larger criminal...

[Continue Reading](#)